

# Mon Gold Property near Yellowknife, NWT



**60 NORTH GOLD**

**Mon Gold Property is a 100% company-owned high-grade past producing (1989–1997) gold mine, from which 15,000 oz. of gold was produced from 15,000 tons of ore.**

- To January 31, 2025, over \$8.53 million for exploration and development has been funded into the project, for purchase of mining equipment, camp and supplies needed for mine development, winter roads, drilling below old stopes, geophysics and surface exploration in VMS and shear zones.
- High grade samples up to **688 g/t gold over 0.5m** have been recovered from the crown pillar.
- Metallurgical testing of a quarter tonne sample yielded **recoveries averaging 98.8%** at a grade of 158 gpt gold.
- Mon Gold Property is in the **Yellowknife Gold Belt**; past mining in this Belt exceeds 15 million ounces of gold at grades >0.5 oz./t, including the Con (6 m oz.), Giant (8 m oz.) and Discovery Mines (1 m oz. at 1 oz./t).
- The mineralization identified in the Mon A-Zone appears to be a viable exploration target for a “Discovery Mine” type of deposit.
- Built winter road and hauled major mining equipment, camp, and stores to site March 2021 and March 2022. Underground development 2021 - 2024.
- **Land Use Permit and Water License for mining and milling production at 100 tpd are in place – the Mon is the only gold project in the NWT permitted for production.**
- Easy 45 km to Mon Gold Property **from Yellowknife: 15 minutes by helicopter, float or ski plane.**
- **Volcanogenic Massive Sulphide (VMS), gold shear zones, and iron oxide copper gold (IOCG) nickel-cobalt-PGM** exploration opportunities on the property have demonstrated substantial additional potential.



## Planned Dates for Key Operational and Corporate Milestones \*

### 2025

- Extend underground ramp and develop stopes to open up an expected 30,000 tonnes of vein below the previous stopes
- Initiate preliminary work to develop the next level below this to elevation 165m AMSL (another 37 m below the current development), targeting an additional 25,000 tonnes of vein.
- Acquire mill equipment and mobilize to Yellowknife
- Drill VMS zone

### 2026

- Transport mill to site and commission
- Mill and mine fully operational.



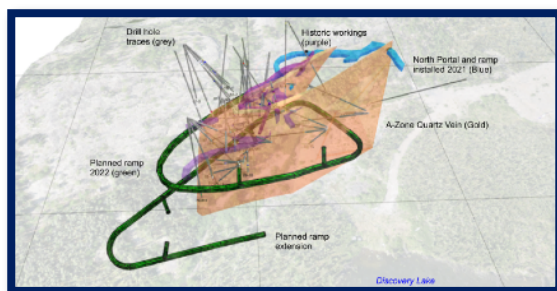


## Capital table as of June 19, 2025

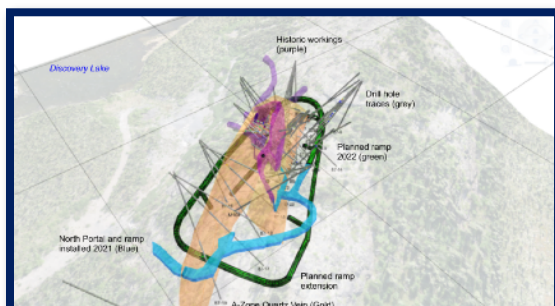
|               |            |
|---------------|------------|
| Shares        | 47,828,578 |
| Warrants      | 2,970,482  |
| Options       | 3,852,500  |
| Fully Diluted | 54,651,561 |

**Note: Management, Directors and Insiders hold 55% of outstanding shares**

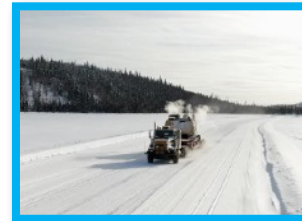
## Three Dimensional Representations of the A-Zone



View looking northwest



View looking southeast



## Management & Board

**Tom MacNeill**, CPA, CGA, CFA Chairman of the Board

**Dave R. Webb**, Ph.D., P.Geol., P.Eng.,  
President & CEO, Director

**John Campbell**, B.Comm, CA, CPA, MBA, CFA; CFO

**Ronald L. Handford**, B.A.Sc., MBA, VP Corp.

Development, and Corp. Secretary

**Bill Van Breugel**, P.Eng., Director

**John Carter**, Director

**Andriyko Herchak**, B.Comm., CPA, CA, Director

**Brian Malahoff**, P.Geo. Director

## Project Manager: New Discovery Mines Ltd.

**Dr. Dave R. Webb**, Director

**Gerry V. Hess**, President

**Rod McKay**, Mine Manager

## Contact Sixty North Gold Mining Ltd.

**Dr. Dave R. Webb**, President & CEO

P: 604-818-1400

[dave@drwgcl.com](mailto:dave@drwgcl.com)

6120 185a St, Surrey, BC V3S 7P9

\* Statements about the Company's future expectations and all other statements in this Fact Sheet other than historical facts are "forward looking statements". Such forward-looking statements are based on numerous assumptions, and involve known and unknown risks, uncertainties and other factors, including risks inherent in mineral exploration and development, which may cause the actual results, performance, or achievements of the Company to be materially different from any projected future results, performance, or achievements expressed or implied by such forward-looking statements. Further details about the risks applicable to the Company are contained in the Company's Prospectus dated January 19, 2018 available on SEDAR ([www.sedar.com](http://www.sedar.com)), under the Company's profile.