



60 NORTH GOLD

Restarting High-grade Gold Mining at the Mon Gold Mine in the Yellowknife Greenstone Beltand more

Presented by D.R. Webb, Ph.D., P.Geol., P.Eng.
President and CEO

Caution



60 NORTH GOLD

Sixty North Gold Mining Ltd. is a British Columbia company ("the Company"). All statements in this presentation are made as at June 19, 2025. This presentation contains "forward-looking statements" within the meaning of applicable securities laws, including statements relating to proposed or anticipated work programs, plans for development of the Mon Property, and/or anticipated financings. Actual results and developments may differ materially from those contemplated by these statements. Factors which may lead the Company to not proceed with anticipated work programs, construction or development projects and studies include factors such as analysis of the exploration results may lead to a determination that further exploration or development is not warranted, delays by weather and other constraints, insufficient funding, delays as a result of early or late onset of winter conditions, availability of personnel and equipment to conduct work programs, a decline in precious metals prices, permit reviews, information requests and other factors not within the Company's control, changes in market conditions, and insufficient financing to complete work programs. Factors that could cause the Company to not proceed with, or reduce or increase, anticipated financings include change in market conditions and changes in the Company's exploration and development plans.

If the Company is unable to complete future financings, the Company may have to delay or alter its operations plans. The factors identified above are not intended to represent a complete list of the factors that could affect the Company. Although the Company has attempted to identify important factors that could cause actual actions, events or results to differ materially from those described in forward looking statements, there may be other factors that cause actions, events or results not to be as anticipated, estimated or intended.

There can be no assurance that forward-looking statements will prove to be accurate, as actual results and future events could differ materially from those anticipated in such statements. The Company does not undertake to update forward-looking statements, except where required by law. Readers should not place undue reliance on forward-looking statements.

No Mineral Reserves or Mineral Resources as defined within the meaning of NI 43-101 have been established on the Mon Gold Property. No Preliminary Assessment (PA), Preliminary Feasibility (PFS), or Feasibility Study (FS) has been completed on the property, and the Company does not anticipate that its work programs will result in the establishment of mineral resources, mineral reserves, or an economic study, on the Mon Gold Property. Readers are cautioned that, as not all risks may have been identified at the time of a production decision is made, mineral properties developed in the absence of a PFS and FS have a higher risk of failure. Investors should consider the investment in securities of the Company as a speculative investment.

Technical information in this presentation has been prepared and reviewed by Dr. Dave R Webb, Ph.D., P.Geol., P.Eng., who is a qualified person for the purposes of NI 43-101, and is the controlling shareholder of Giauque Holdings Ltd. (the royalty holder of the Mon Gold Property) and a principal of New Discovery Mines Ltd. (the vendor of the Mon Gold Property). The technical information in August 3, 2023 prepared on Form NI 43-101F1 by Dr. D.R. Webb, Ph.D., P.Geol., P.Eng., qualified person for the purposes of NI 43-101 who are not independent of the Company and the property vendor.



Most mining startups are focused on expensive exploration programs and feasibility studies in the hopes of de-risking a project and selling out to a larger company. Chester Millar prefers to skip drilling and start mining. **“My Feasibility Study is done by doing things. I will actually mine and produce gold. That to me is better than any Feasibility Study because it isn’t a study, it’s proven fact.”**

Chester Millar is the founder of several multi-billion-dollar gold producers including Glamis Gold (bought by Goldcorp), Alamos Gold and Eldorado Gold. He was inducted into the Canadian Mining Hall of Fame in 2008. The 88 year old mine developer credits luck, experience and a simple strategy for his success.



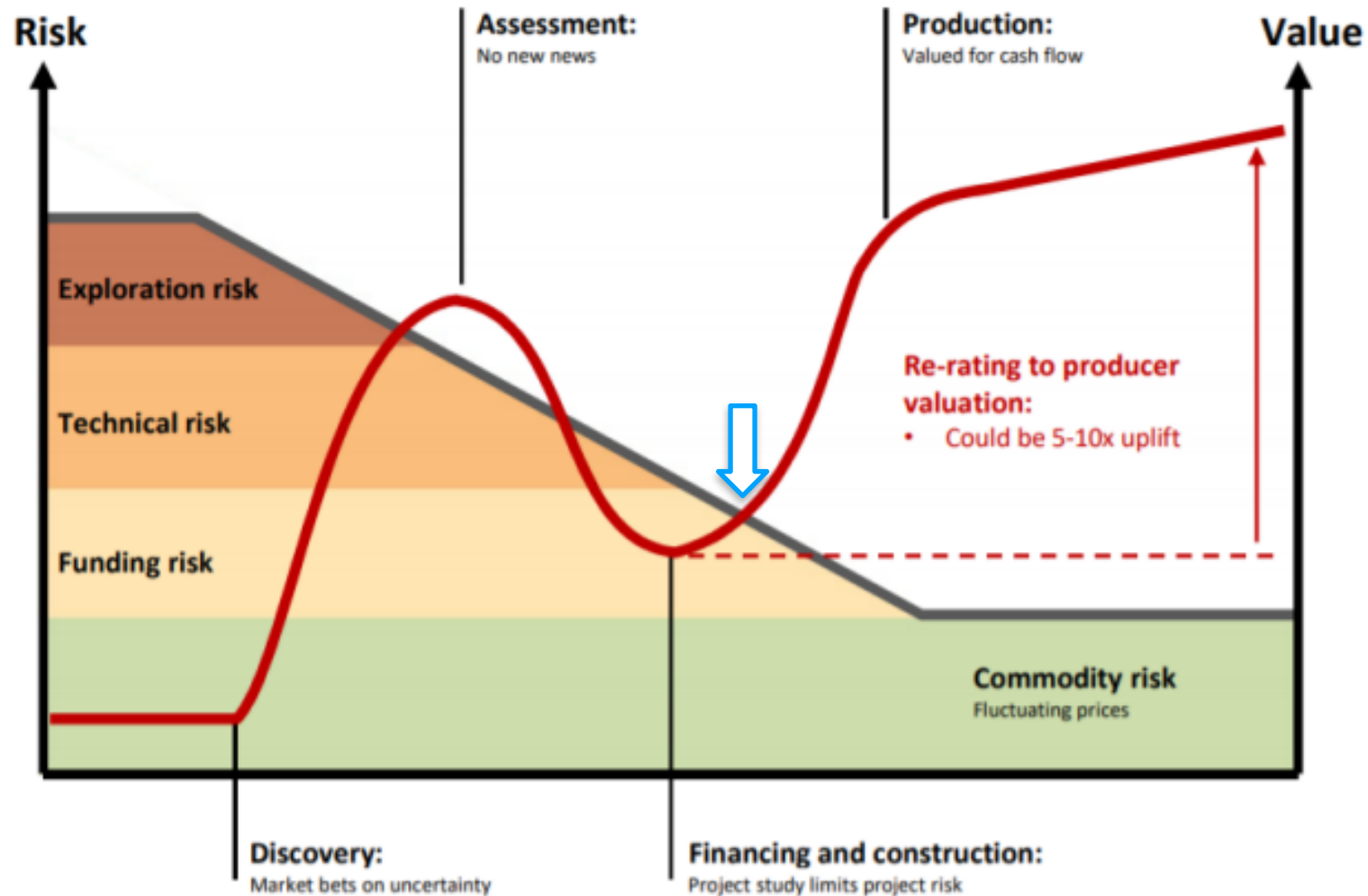
Sixty North Gold Mining Ltd.'s plan to restart a high-grade past producing gold mine, already permitted:

- Drive ramps and develop the known vein beneath the historic stopes at shallow levels. (Four to six weeks)
- Develop stopes (mining areas) and bring gold bearing vein material to surface. (Four weeks, operating for years)
- Acquire, install, and commission a mill on the property, commence production and sale of gold bars and concentrate. (8 months, operating for years)

Mining Investment Cycle



60 NORTH GOLD





Cost per ounce for active explorers

Average Cost of Discovery*	\$24.45
Average Current Value of Discovery**	\$12.65

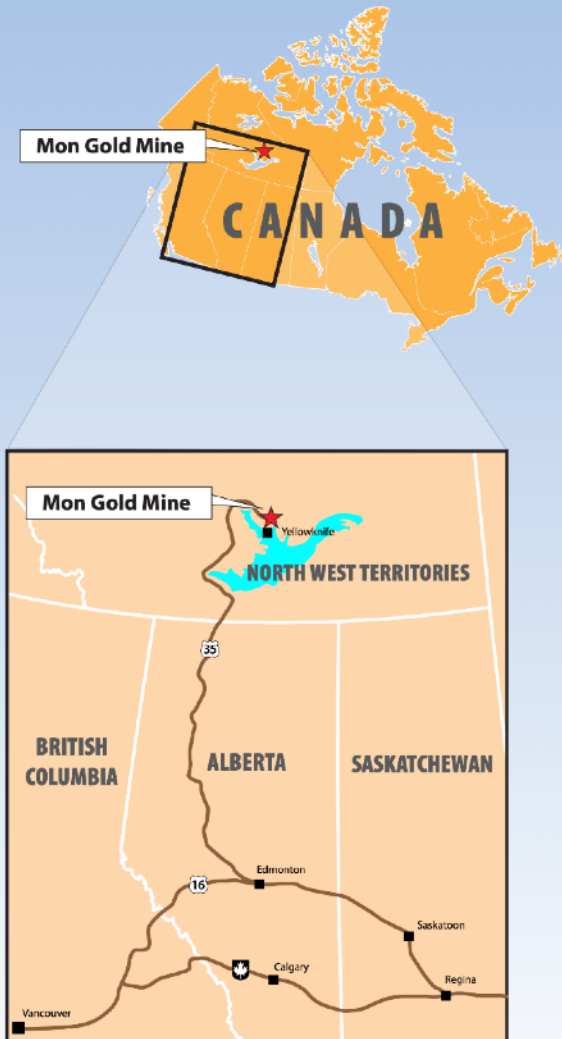
*Total expenditures on project / total ounces (all 43-101)

**Total market cap

Yellowknife Gold Belt



60 NORTH GOLD

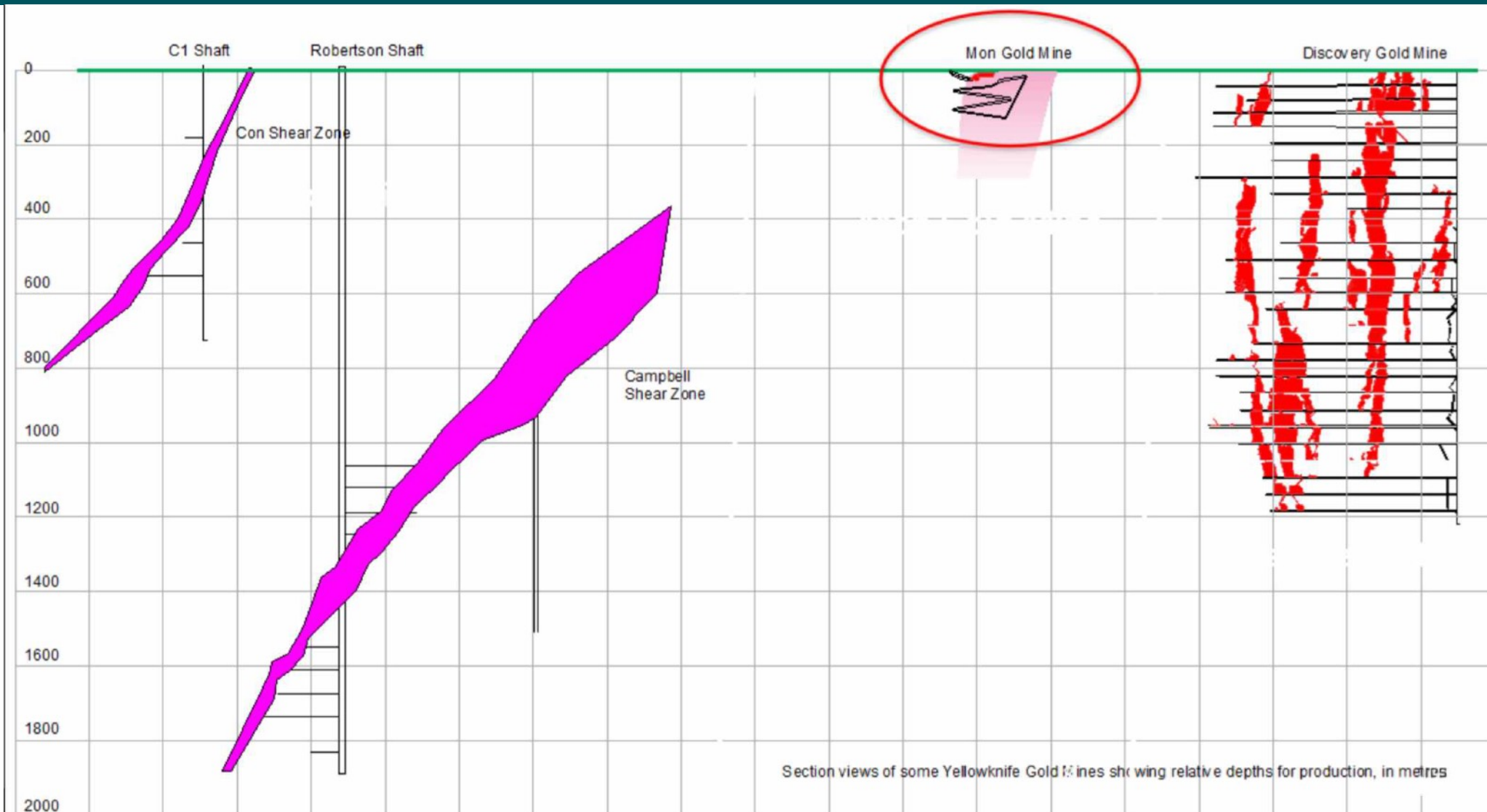


SIXTY NORTH GOLD MINING LTD. – CSE: SXTY – FRANKFURT: 2F40 – OTC-PINK: SXNTF

Yellowknife Gold Belt Mine X-Sections



60 NORTH GOLD



Mon Mine - Layout and Facilities



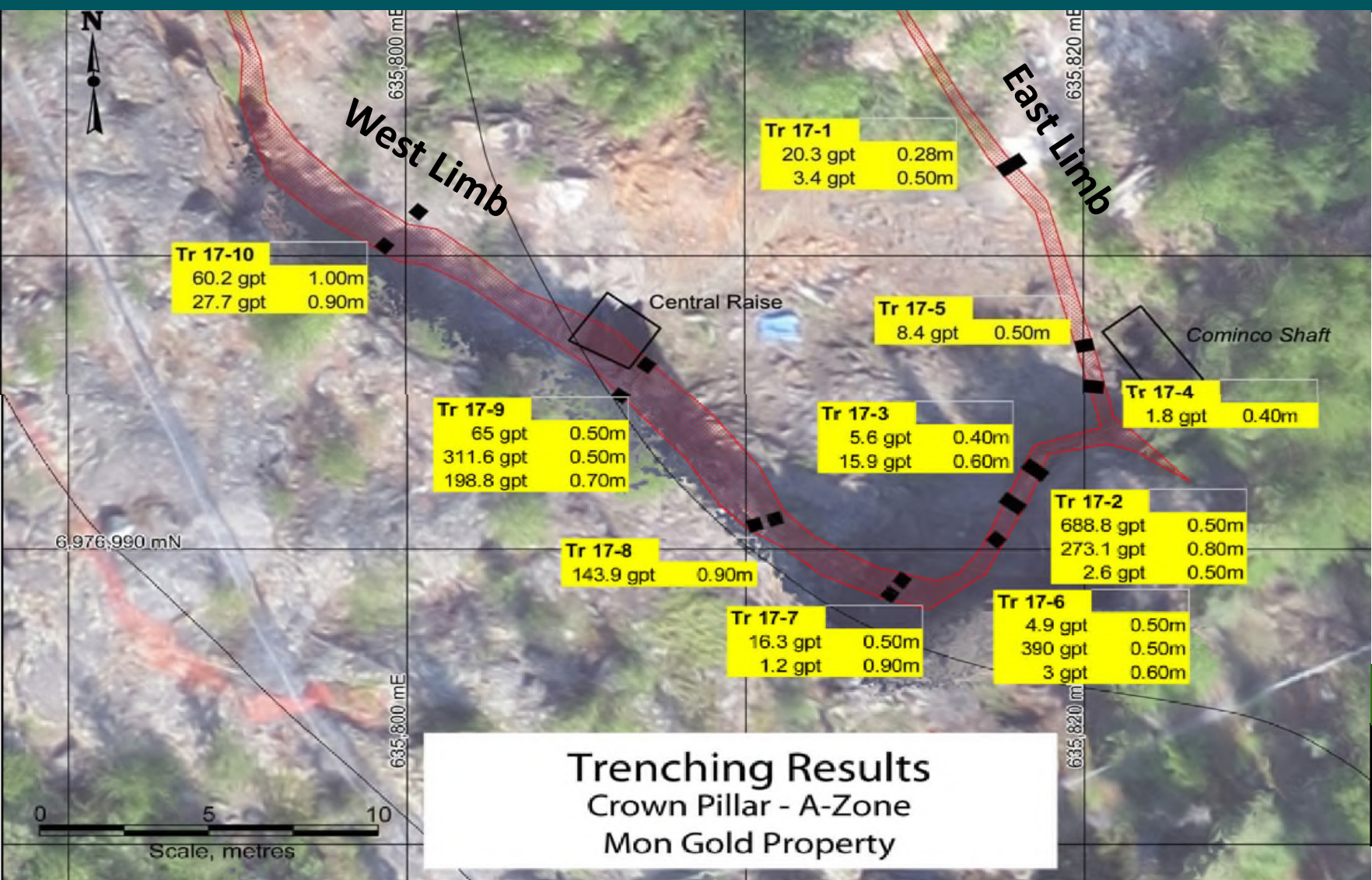
60 NORTH GOLD



Grade is Important



60 NORTH GOLD



Trench	Width (m)	Grade (gpt)
17-1	0.8	9.47
17-2	1.8	313.43
17-3	1.0	11.78
17-4	0.4	1.80
17-5	0.5	8.40
17-6	1.6	124.53
17-7	0.9	6.59
17-8	0.9	143.90
17-9	1.7	192.62
17-10	1.9	44.81
Ave.	1.2	116.34

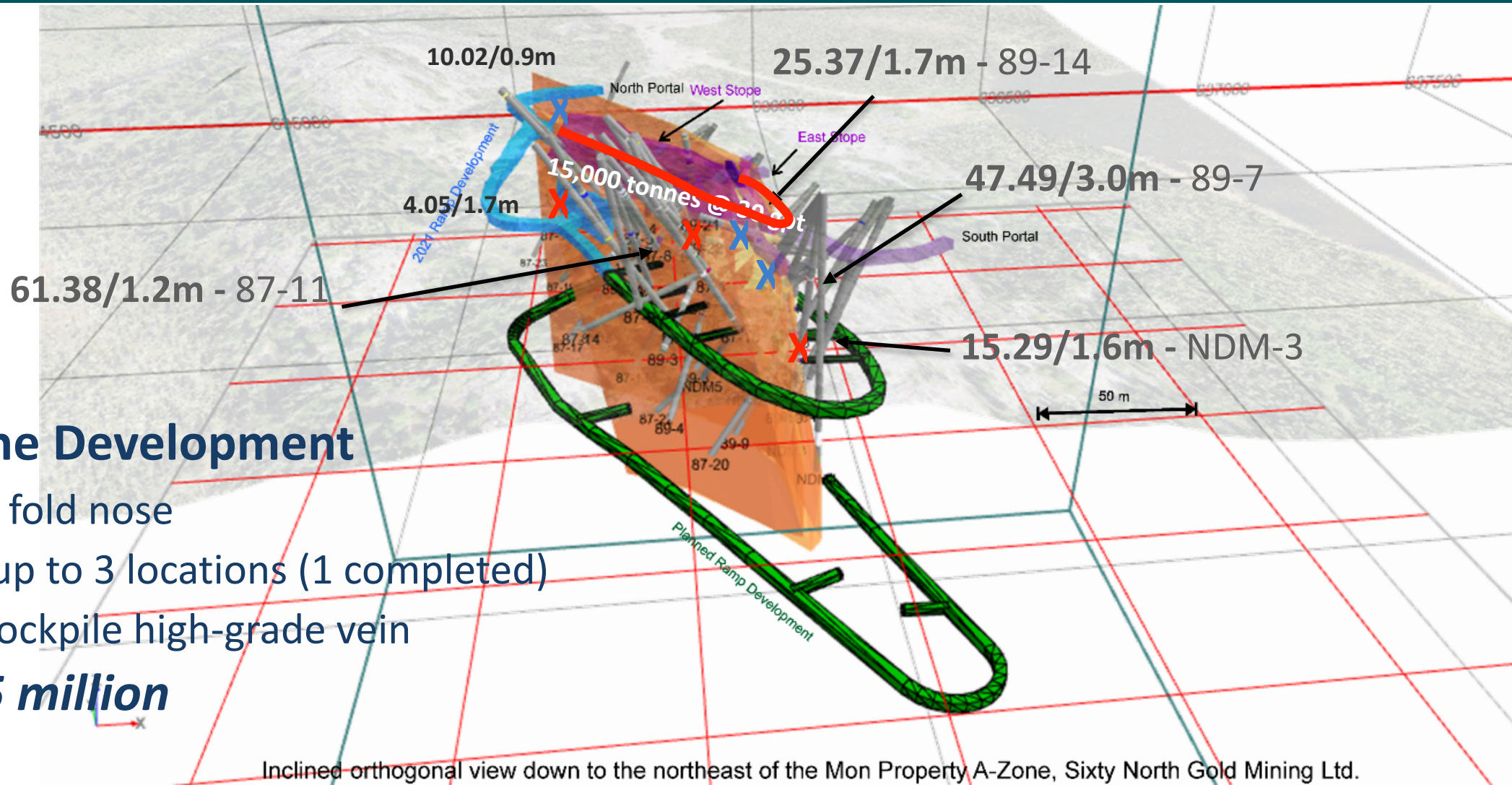
Composite Metallurgical Test

Kg	Au, gpt	Gravity	Float	Recovery
243	158.0	76.1%	22.7%	98.8%

Development Plans - Phase 1



60 NORTH GOLD



Continue Mine Development

- Drive access to fold nose
- Access vein in up to 3 locations (1 completed)
- Remove and stockpile high-grade vein
- **Budget \$1.5 million**

Development Plans - Phase 1



60 NORTH GOLD

In 2024 SXTY reopened North Ramp and reset services, extending it 44 m, with a crosscut accessing West Limb and East Limb of A-Zone, and discovering a new vein, the DD Zone



Development Plans - Phase 1



60 NORTH GOLD

Continue to extend 3m x 4m Main Ramp to fold nose, and drive 3m x 3m crosscuts



Development Plans - Phase 1



60 NORTH GOLD

Intersected DD-Zone Gold-Bearing Structure in Main Ramp

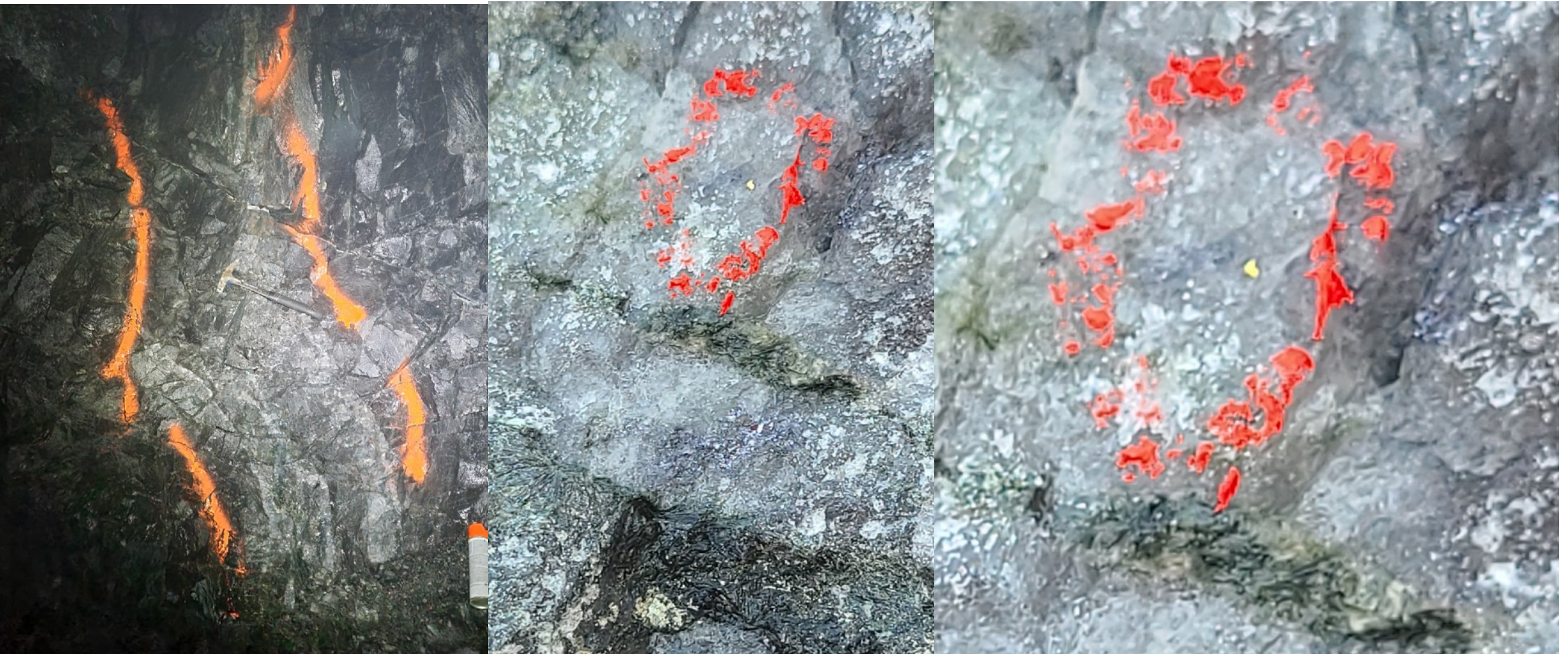


Development Plans - Phase 1



60 NORTH GOLD

Intersected A-Zone Gold-Bearing Structure in 970XCE Crosscut



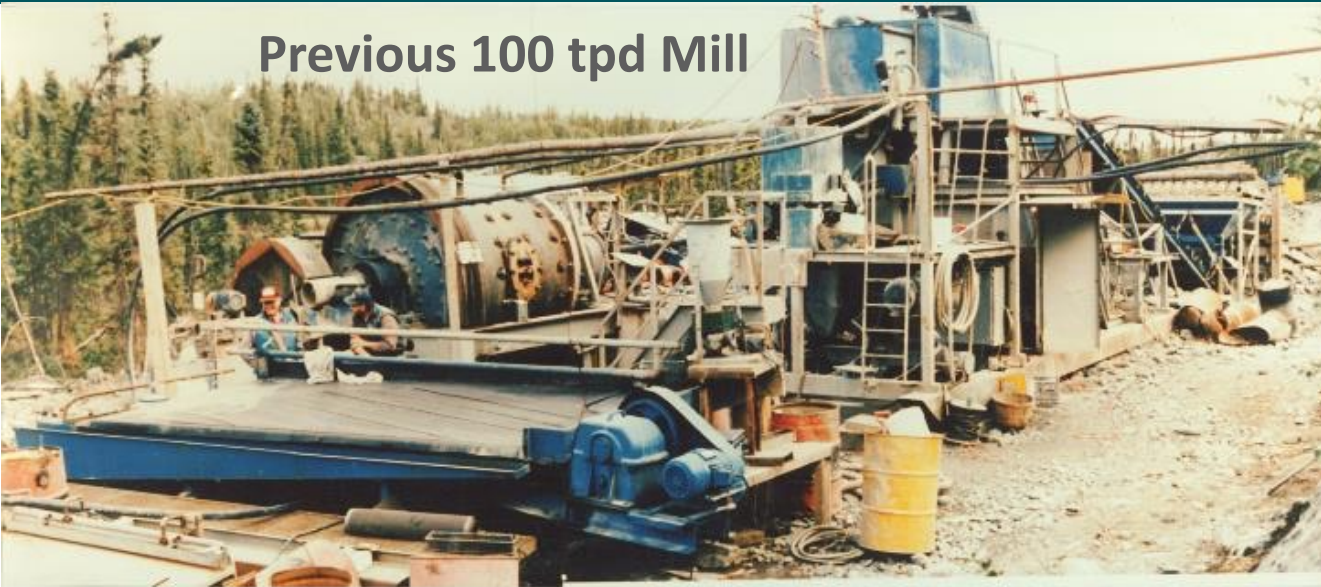
SIXTY NORTH GOLD MINING LTD. – CSE: SXTY – FRANKFURT: 2F40 – OTC-PINK: SXNTF

Development Plans - Phase 2



60 NORTH GOLD

Previous 100 tpd Mill



Commence processing

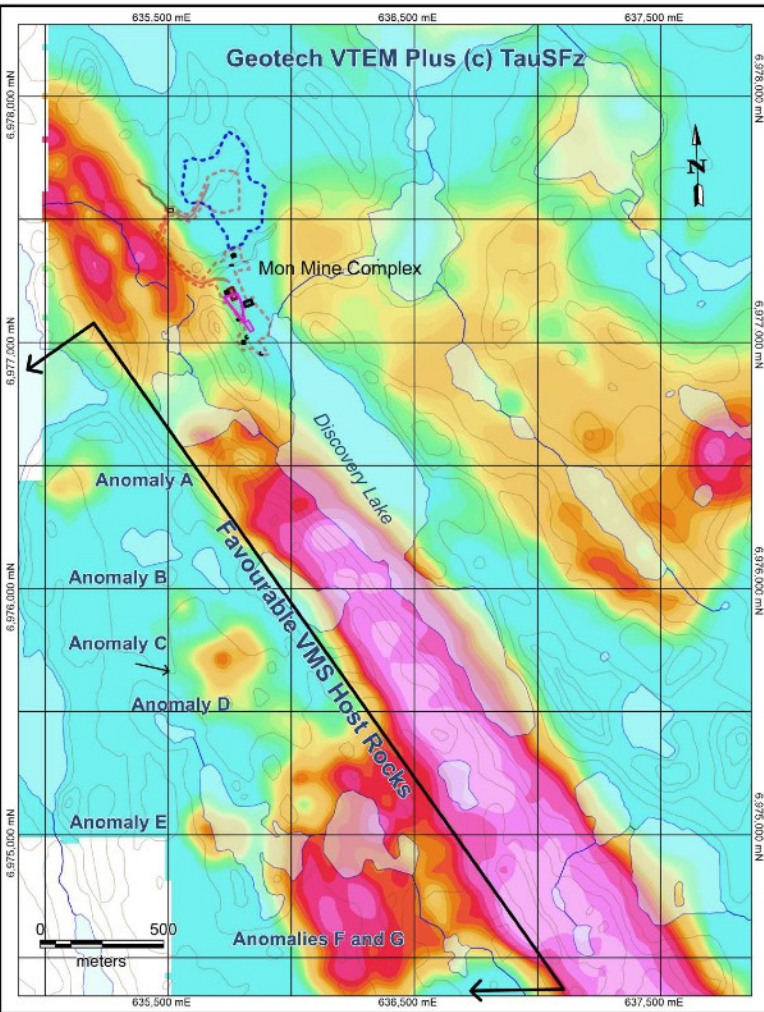
- Acquire and install mill
- Restock fuel, explosives, spares
- Commence operations, pour gold dore bars
- ***Budget \$3.0 million***



Gerry Hess
tabling gold
concentrate

Volcanogenic Massive Sulphide (VMS)

- VMS deposits account for 40% of Canadian silver production, 49% of its zinc, 27% of copper, 20% of its lead, and 3% of gold.
- 2018 exploration by SXTY led to discovery of a new 2,500 m long horizon hosting VMS mineralization enriched in silver, lead, zinc and gold.
- Trench assays including 0.45 m of 203 gpt silver, 1.0 gpt gold, 0.59% lead and 0.96% zinc, with elevated cobalt and antimony.
- 2019/2020 airborne geophysics has identified at least seven isolated anomalies within favourable rocks. The strongest anomalies are not exposed. This has generated at least 6 drill targets.
- A 2025 shallow drill program on one target identified massive and semi-massive sulphide horizons and anomalous gold and silver. This upper conductor zone is interpreted to be the iron-rich cap-rock of the VMS system. Future drilling will target the lower conductor which is expected to represent the best target for the VMS system.

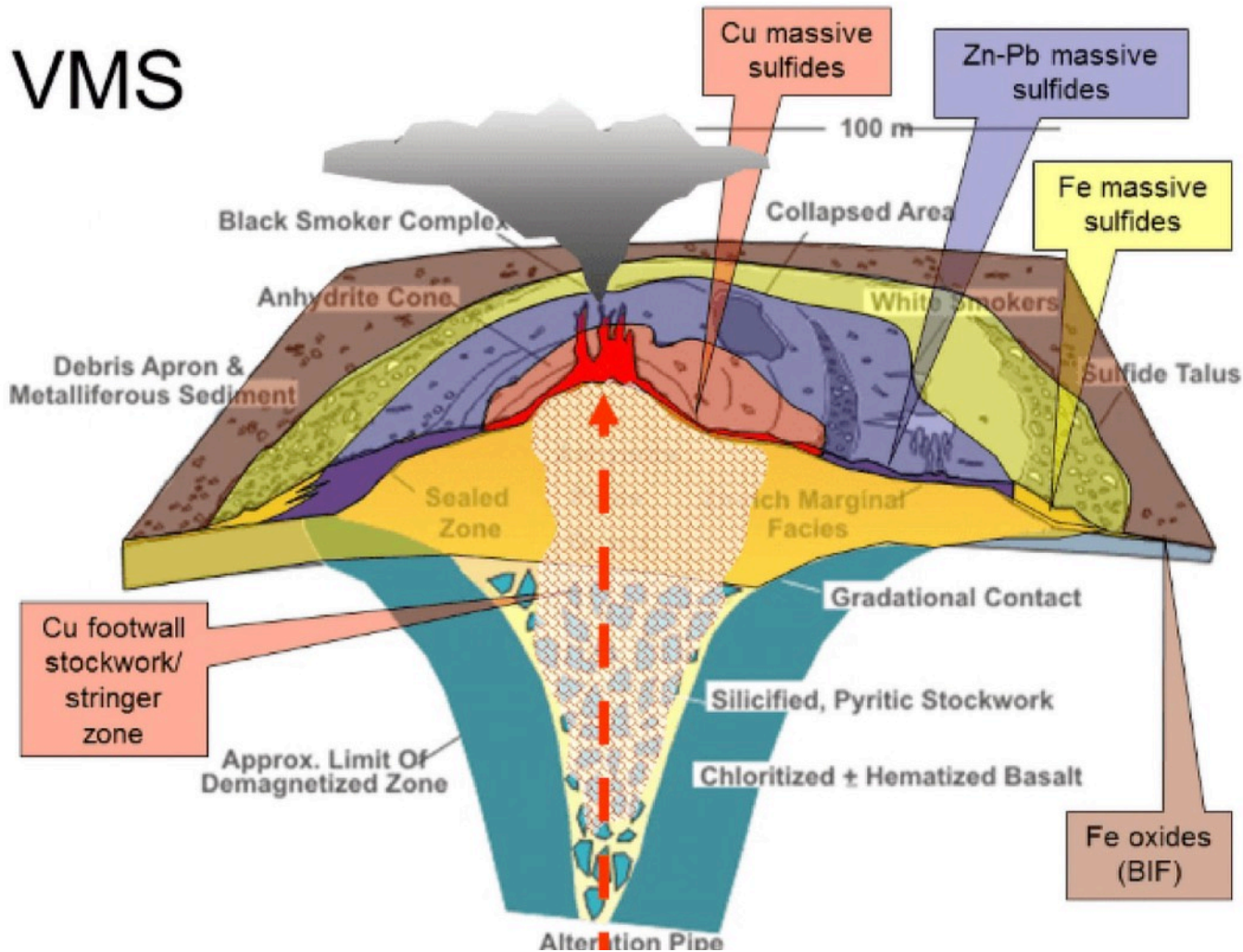


VMS Formation



60 NORTH GOLD

VMS



Submarine hydrothermal vents discharge metal-rich fluids on the sea floor. These build-up over millions of years to leave massive sulphide deposits containing Cu, Zn, Pb, Ag, Au and many minor elements.

From <https://geologyscience.com/geology-branches/mining-geology/volcanogenic-massive-sulfide-vms-deposits/>

Gold Price History



60 NORTH GOLD



<https://www.macrotrends.net/1333/historical-gold-prices-30-year-chart> US\$/oz.

Capital Structure and Trading



SXTY Trading:

1. CSE: SXTY
2. OTC-Pink: SXNTF
3. Frankfurt and Tradegate Exchange 2F40
4. Market Cap : \$4.69 million CAD (2025-05-30)

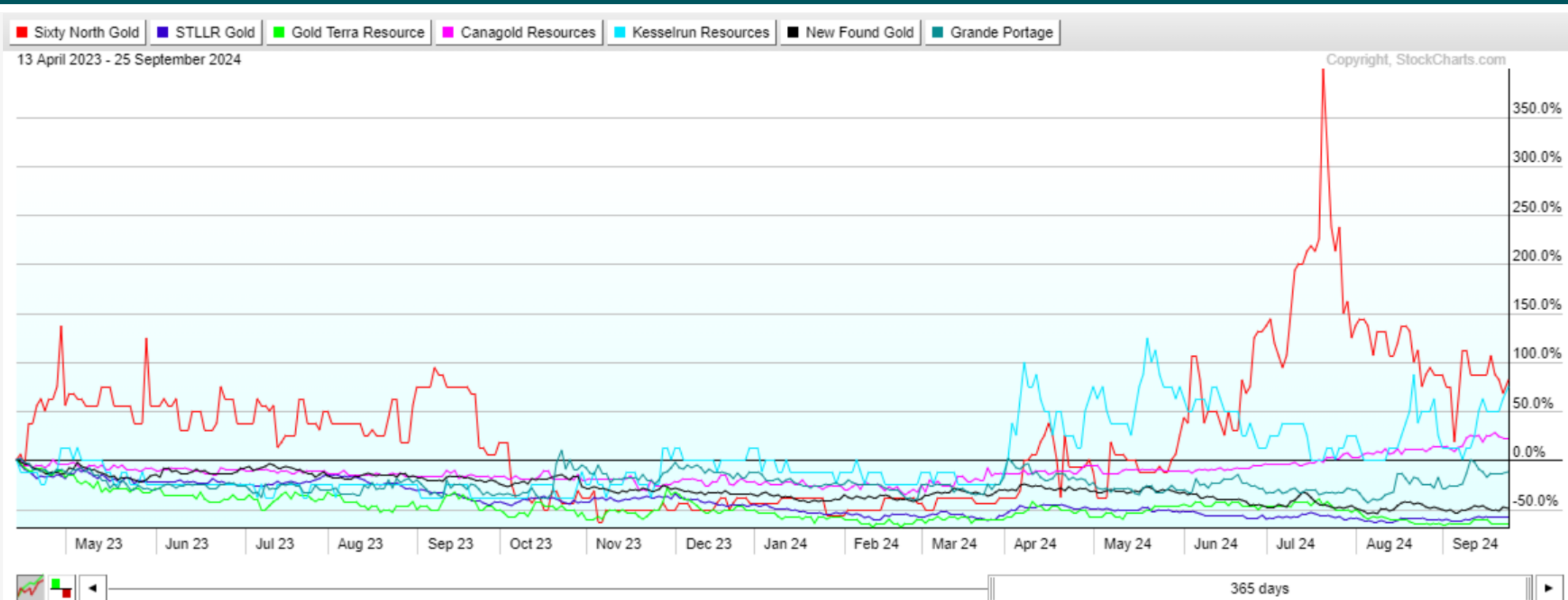
2025-06-19	Shares, warrants and options
Shares	47,828,578
Warrants (\$0.11 – – if exercised, raise \$326,753)	2,970,482
Options (\$0.08 – \$1.00)	3,852,500
Fully Diluted	54,651,561
Note: Management, Directors and Insiders hold 55% of outstanding shares	



Comparative Market Value



60 NORTH GOLD



SIXTY NORTH GOLD MINING LTD. – CSE: SXTY – FRANKFURT: 2F40 – OTC-PINK: SXNTF



Sixty North Gold Mining Ltd.

Tom MacNeill, CPA, CGA, CFA Chairman of the Board

Dr. Dave R. Webb, B.A.Sc., M.Sc., Ph.D., P.Geol., P.Eng.; Director, President & CEO

John Campbell, MBA, CFA, CPA; CFO

Ronald L. Handford, B.A.Sc., MBA; VP Corp. Dev. & Corp. Secretary

John Carter, Director

Andriyko Herchak, B.Comm., CPA, CA; Director

Brian Malahoff, P.Geo.; Director

Bill Van Breugel, P.Eng.; Director

Key Operations Personnel



60 NORTH GOLD

Dr. Dave R. Webb, Ph.D., P.Geol., P.Eng.

has over 40 years of experience, completed his M.Sc. and Ph.D. in Yellowknife. He discovered four gold deposits in Yellowknife (one into production, three to Feasibility Studies and permitting). He acquired the Mon Property in the late 1980's from Cominco Ltd. and developed it into production in the 1990's.

Rod McKay

Mine Manager - Mon Gold mine project, has worked as a project superintendent on numerous underground mining projects, including responsibility for milling operations and exploration activities. He has more than 40 years of diversified work experience in all aspects of underground mine construction, operation and maintenance, including in the NWT.

Gerry V. Hess

Operations Advisor, is a former Mine Manager of the Mon Mine, and underground superintendent at four other mines in the Yellowknife area. He has been an independent mine contractor installing several kilometres of underground workings at various remote sites and has been a former contractor at one of the NWT's diamond mines.



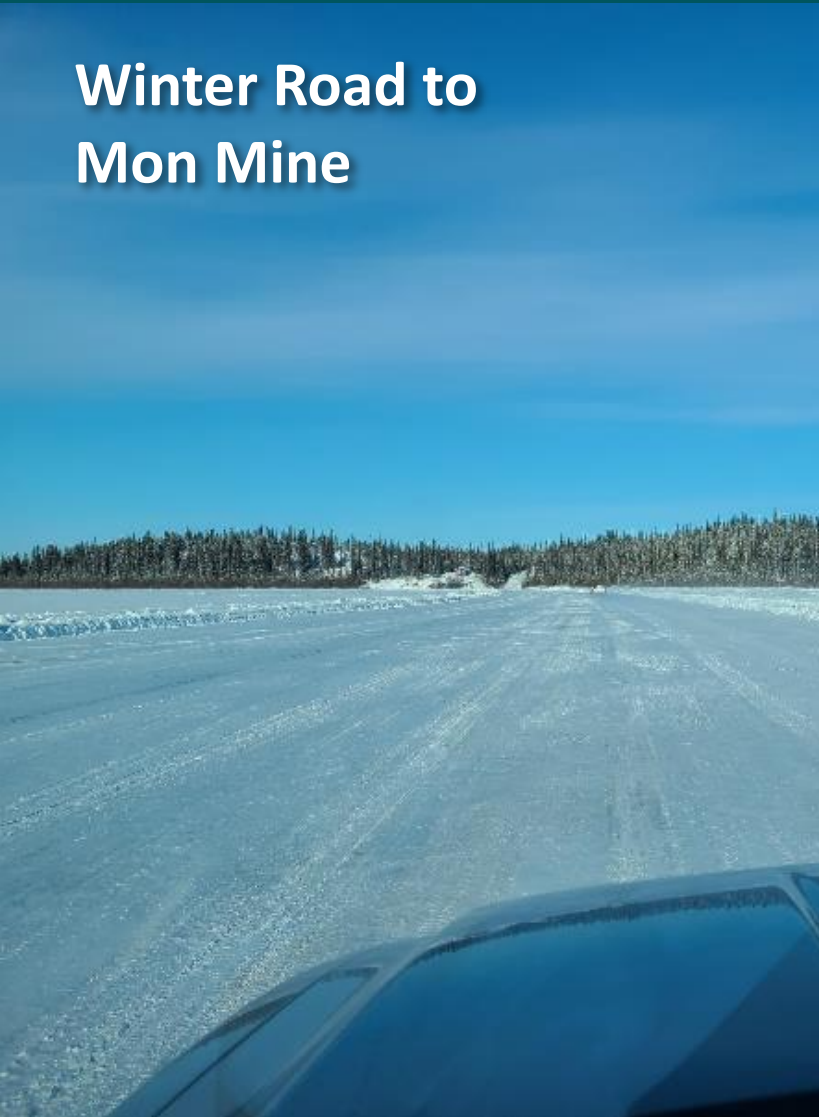
- High-grade past producer in a high-grade gold belt
- Permitted to mine and mill
- Mining equipment and supplies are on site
- Experienced operators
- Experienced Managers
- Near term cash-flow
- VMS exploration potential on site, with silver, lead, zinc, gold, cobalt and antimony values

Mon Mine - 40 km from Yellowknife NWT

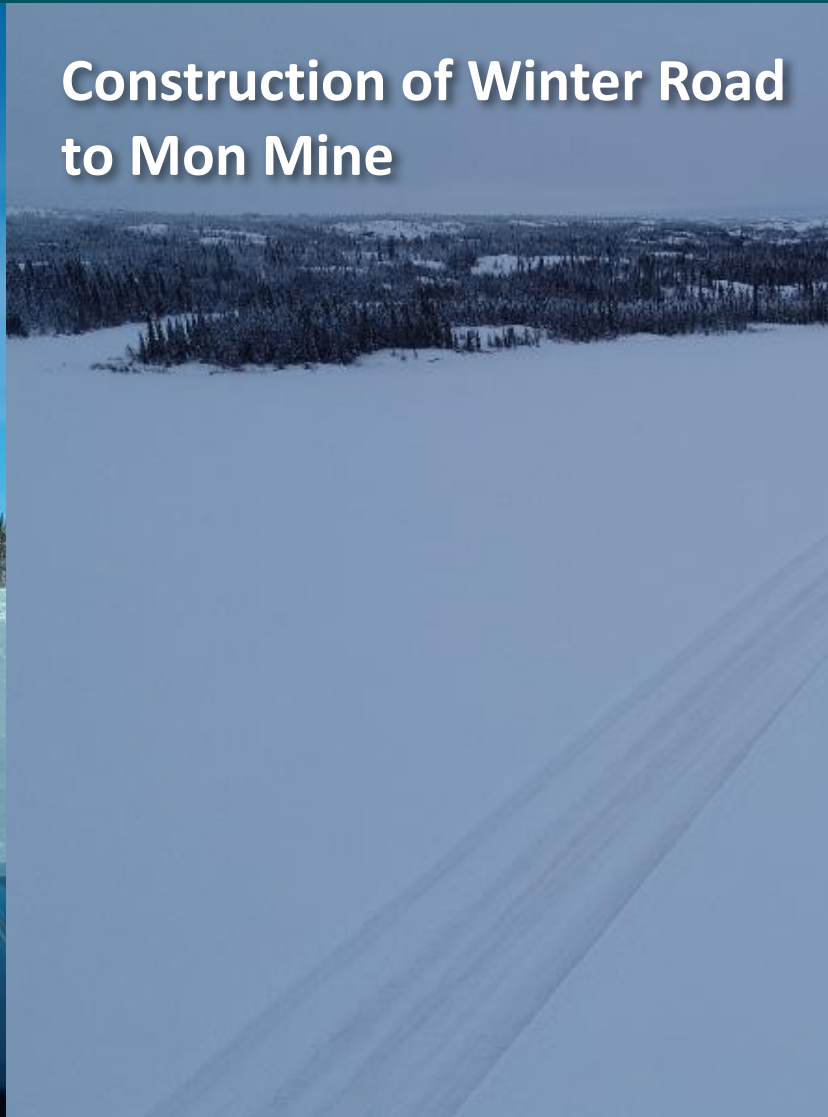


60 NORTH GOLD

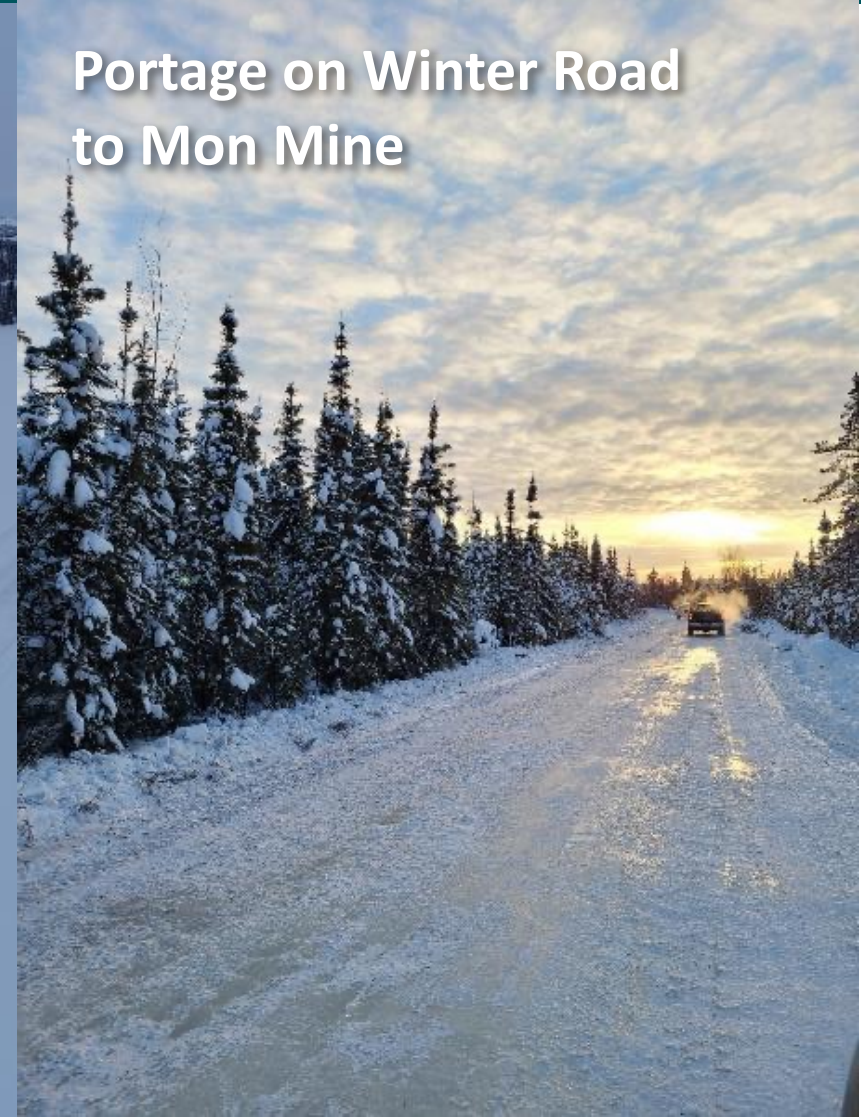
Winter Road to
Mon Mine



Construction of Winter Road
to Mon Mine



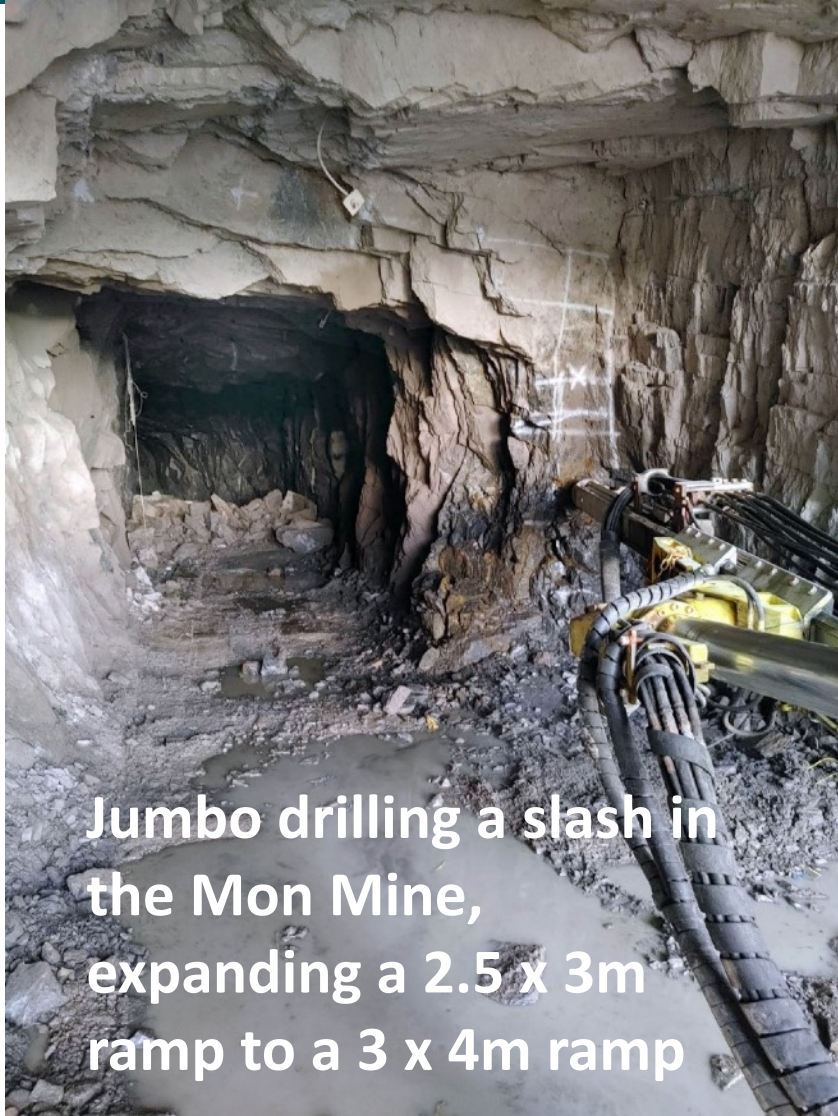
Portage on Winter Road
to Mon Mine



Photos



60 NORTH GOLD



Jumbo drilling a slash in the Mon Mine, expanding a 2.5 x 3m ramp to a 3 x 4m ramp



Two yard Scooptram on Mon Property

Photos



60 NORTH GOLD

Aerial View



Gold button from Mon metallurgical testing

HISTORY

East-facing Longitudinal Section through the Con Mine C-4 Shear Zone



60 NORTH GOLD

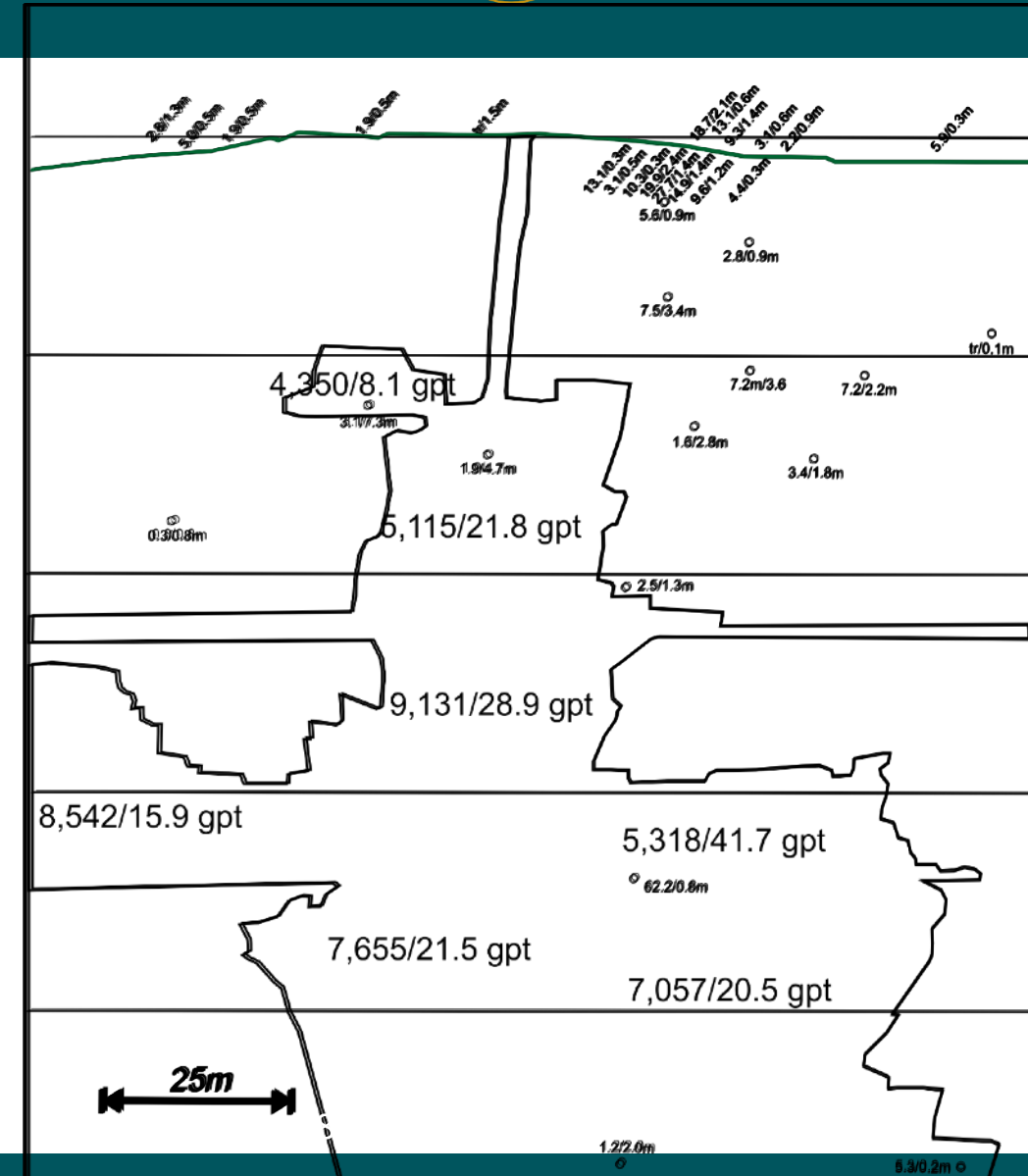
C-4 Shear one is exposed with a 25 m long high-grade section exposed averaging 17 gpt across 1.2 metres within 11.4 gpt over 100 metres.

Fourteen diamond drill holes intersect the structure returning an average of 5.3 gpt gold across 2.2 metres.

Development led to 47,100 tonnes being mined from seven separate stopes.

The 47,100 tonnes graded 22.84 gpt gold recovering 34,500 ounces of gold. This works out to twice what the average surface grades were, 25% higher grade than the high-grade surface section, and almost five times the diamond drill grades.

**Clearly diamond drilling does not work in this situation!
This 6 million ounce deposit would not have been identified without bulk sampling.**



HISTORY

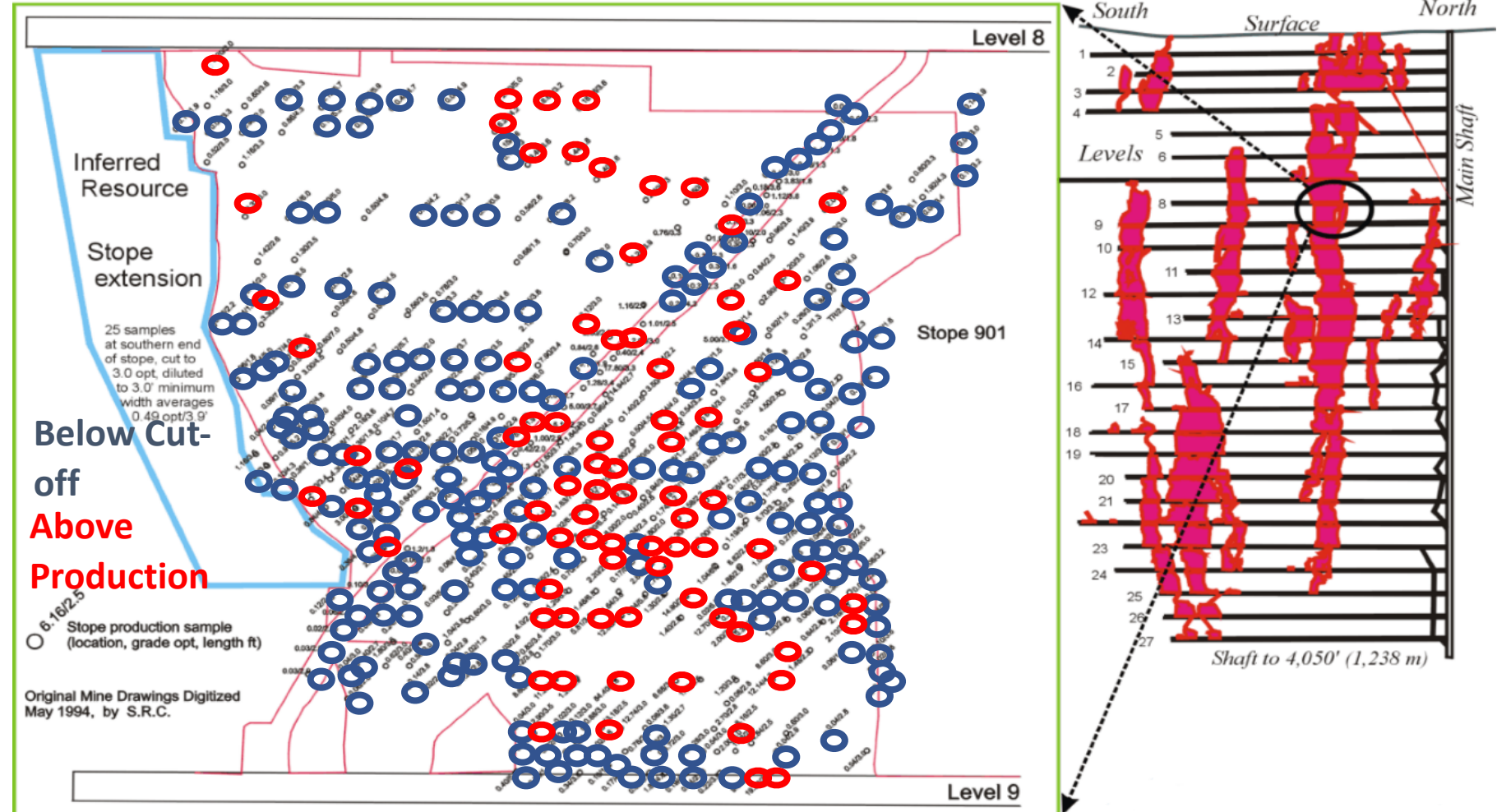
East-facing Longitudinal Section through the Discovery Mine



60 NORTH GOLD

DISCOVERY MINE, 901 STOPE, PRODUCTION SAMPLES

High-grade gold is not homogenously distributed, rather it occurs in clusters of very concentrated grades



Contact



60 NORTH GOLD

Dr. Dave R. Webb
B.A.Sc., M.Sc., Ph.D., P.Geol.,
P.Eng.

President & CEO

Sixty North Gold Mining Ltd.

p: 604-818-1400

e: dave@drwgcl.com

www.sixtynorthgold.com

CSE: SXTY

FRANKFURT: 2F40

TRADEGATE: 2F40

OTC-PINK: SXNTF



@SixtyNorthGold



sixtynorthgold